



Product End-of-Life Disassembly Instructions

Product Category: Notebooks and Tablet PCs

Marketing Name / Model

[List multiple models if applicable.]

HP ProBook 645 G1 Notebook PC

Purpose: The document is intended for use by end-of-life recyclers or treatment facilities. It provides the basic instructions for the disassembly of HP products to remove components and materials requiring selective treatment, as defined by EU directive 2002/96/EC, Waste Electrical and Electronic Equipment (WEEE).

1.0 Items Requiring Selective Treatment

1.1 Items listed below are classified as requiring selective treatment.

1.2 Enter the quantity of items contained within the product which require selective treatment in the right column, as applicable.

Item Description	Notes	Quantity of items included in product
Printed Circuit Boards (PCB) or Printed Circuit Assemblies (PCA)	With a surface greater than 10 sq cm	1
Batteries	All types including standard alkaline and lithium coin or button style batteries	1
Mercury-containing components	For example, mercury in lamps, display backlights, scanner lamps, switches, batteries	0
Liquid Crystal Displays (LCD) with a surface greater than 100 sq cm	Includes background illuminated displays with gas discharge lamps	0
Cathode Ray Tubes (CRT)		0
Capacitors / condensers (Containing PCB/PCT)		0
Electrolytic Capacitors / Condensers measuring greater than 2.5 cm in diameter or height		0
External electrical cables and cords		0
Gas Discharge Lamps		0
Plastics containing Brominated Flame Retardants weighing > 25 grams (not including PCBs or PCAs already listed as a separate item above)		0
Components and parts containing toner and ink, including liquids, semi-liquids (gel/paste) and toner	Include the cartridges, print heads, tubes, vent chambers, and service stations.	0
Components and waste containing asbestos		0
Components, parts and materials containing refractory ceramic fibers		0

Components, parts and materials containing radioactive substances		0
---	--	---

2.0 Tools Required

List the type and size of the tools that would typically be used to disassemble the product to a point where components and materials requiring selective treatment can be removed.

Tool Description	Tool Size (if applicable)
Description #1	Cross head of screwdriver
Description #2	TORX T8 (2.31mm)
Description #3	
Description #4	
Description #5	

3.0 Product Disassembly Process

3.1 List the basic steps that should typically be followed to remove components and materials requiring selective treatment:

1. Follow steps described in Disassembly instruction (file attached)
2. If parts can be removed without using a tool, remove it first.
3. Use correct screwdriver and torque value before unlock the screw.
- 4.
- 5.
- 6.
- 7.
- 8.

3.2 Optional Graphic. If the disassembly process is complex, insert a graphic illustration below to identify the items contained in the product that require selective treatment (with descriptions and arrows identifying locations).

MANUFACTURING PROCESS INSTRUCTIONS MECHANICAL DISASSEMBLY

MODEL : Cyclone 14B

Sub-assembly name:	FA DIS ASS'Y		
Document No.:	Cyclone 14 B FA DIS ASS'Y SOP		
Written by:	Stanley Chen	Revision:	0.1
Date:	2013/08/26	Page:	1 of 30

A. Current station version list

Station	Ver.	Station	Ver.	Station	Ver.	Station	Ver.
1	0.1	11	0.1	21	0.1		
2	0.1	12	0.1	22	0.1		
3	0.1	13	0.1	23	0.1		
4	0.1	14	0.1	24	0.1		
5	0.1	15	0.1	25	0.1		
6	0.1	16	0.1	26	0.1		
7	0.1	17	0.1	27	0.1		
8	0.1	18	0.1				
9	0.1	19	0.1				
10	0.1	20	0.1				

B. Version Modify list

Revision	Date	Station	Content	Ver.	Design
0.1	2013/08/26	ALL	FIRST VERSION	0.1	Stanley Chen



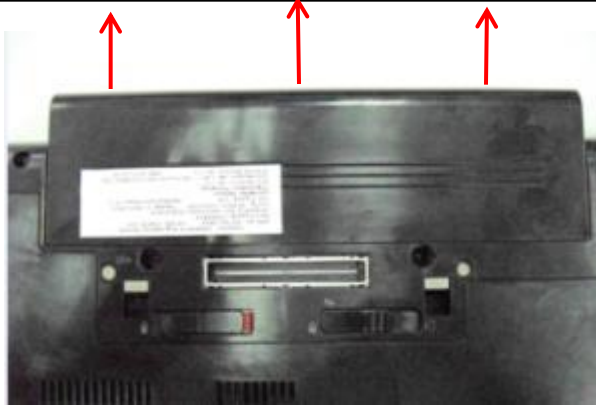
Standard Operation Procedure

Document No. Cyclone 14B FA DIS ASS'Y SOP

Station : 1(1/1)

Name : disassembly Battery

Ver. : 0.1 Date : 2013/08/26



Step:

1. Turn the computer over. (Fig.1)
2. Slide the battery latch to the unlock position. (Fig.1)
3. Remove the battery.

Fig.1

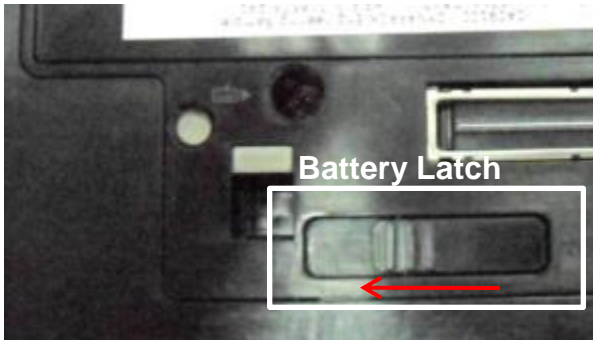


Fig.2

Notes : If finding anything uncommon, notice foreman or assistant at once.

Holding fixture list (holding fixture standard)	Qty	Holding fixture list (holding fixture standard)	Qty

Tabulator: Alicia Chien

Auditor : Stanley Chen

Issue department: NPSU-PPE



Standard Operation Procedure

Document No. Cyclone 14B FA DIS ASS'Y SOP

Station : 2(1/1)

Name : disassembly Bottom Cover SET

Ver. : 0.1

Date : 2013/08/26

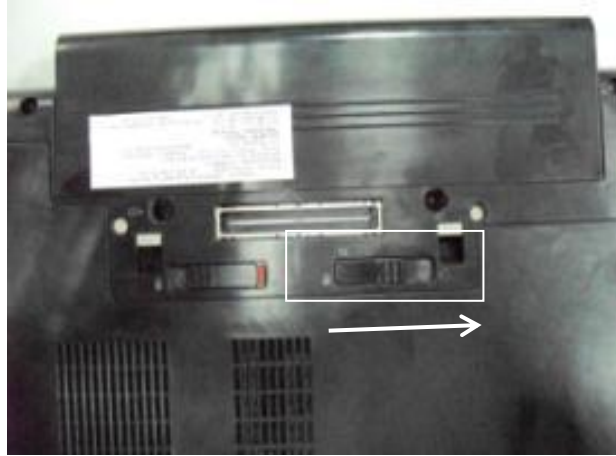


Fig.1

Step:

1. Slide the door latch to the unlock position. (Fig.1)
2. Remove the bottom cover SET (6070B0686401). (Fig.2)

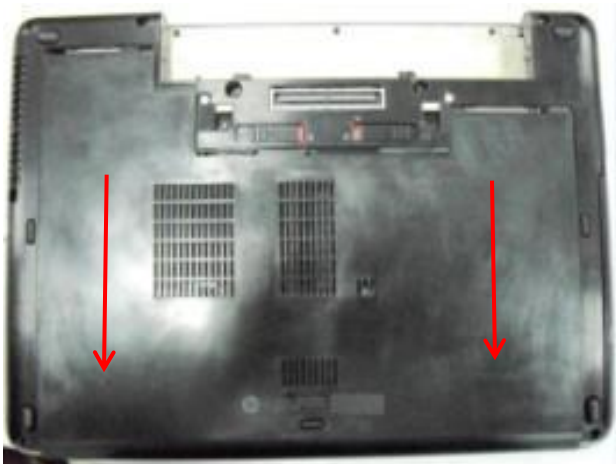


Fig.2

Notes : If finding anything uncommon, notice foreman or assistant at once.

Holding fixture list (holding fixture standard)	Qty	Holding fixture list (holding fixture standard)	Qty

Tabulator: Alicia Chien

Auditor : Stanley Chen

Issue department: NPSU-PPE



Standard Operation Procedure

Document No. Cyclone 14B FA DIS ASS'Y SOP

Station : 3(1/1)

Name : disassembly ODD (or ODD Dummy) ,

Ver. : 0.1

Date : 2013/08/26

Loosen K/B screws

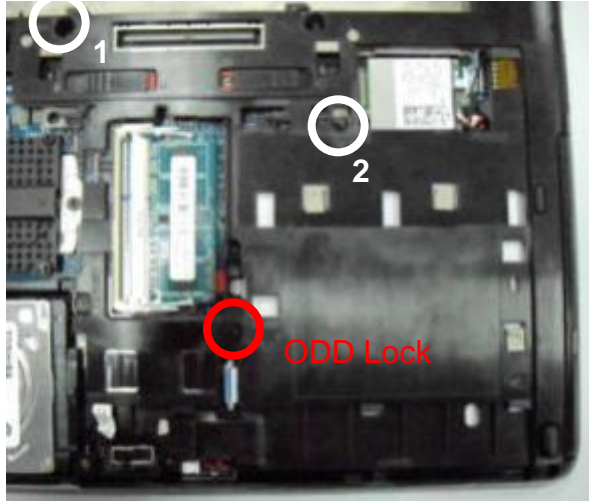


Fig.1

Step:

1. Loosen ODD SET (or ODD dummy) screw * 1, disassembly ODD (or ODD Dummy). (Fig.1)
2. Loosen K/B SET screw * 2. (Fig.1)

Notes : If finding anything uncommon, notice foreman or assistant at once.

Holding fixture list (holding fixture standard)	Qty	Holding fixture list (holding fixture standard)	Qty
Electric cross screwdriver (#1)	1		

Tabulator: Alicia Chien

Auditor : Stanley Chen

Issue department: NPSU-PPE



Standard Operation Procedure

Document No. Cyclone 14B FA DIS ASS'Y SOP

Station : 4(1/1)

Name : disassembly WWAN Card

Ver. : 0.1 Date : 2013/08/26

Step:

[Ignore below procedures for the SKU without WWAN]

1. disassembly WWAN antenna cable. (Fig.1)
2. Loosen screw (6052B0156301) * 1. (Fig.2)
3. disassembly WWAN card. (Fig.2)



Fig.1

With WWAN SKU, 且出 WWAN Module



Fig.2

Notes : If finding anything uncommon, notice foreman or assistant at once.

Holding fixture list (holding fixture standard)	Qty	Holding fixture list (holding fixture standard)	Qty
Electric cross screwdriver (#1)	1		

Tabulator: Alicia Chien

Auditor : Stanley Chen

Issue department: NPSU-PPE



Standard Operation Procedure

Document No. Cyclone 14B FA DIS ASS'Y SOP

Station : 5(1/1)

Name : disassembly Fan

Ver. : 0.1 Date : 2013/08/26

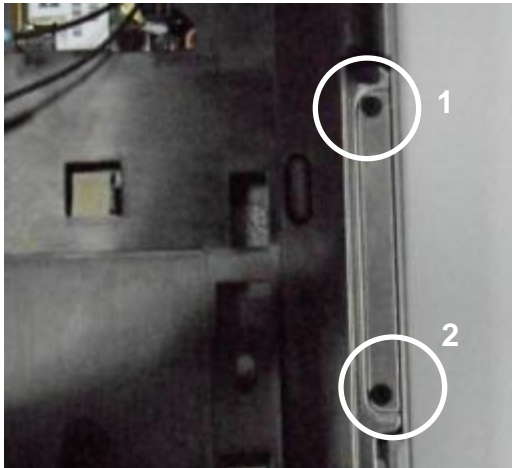


Fig.1

Step:

1. Loosen ODD screw (6052A0035101) * 2. (Fig.1)
2. Loosen fan set screw * 2, then remove the fan (6033B0034401). (Fig.2)
3. Disconnect HDD cable from M/B. (Fig.3)



Fig.2

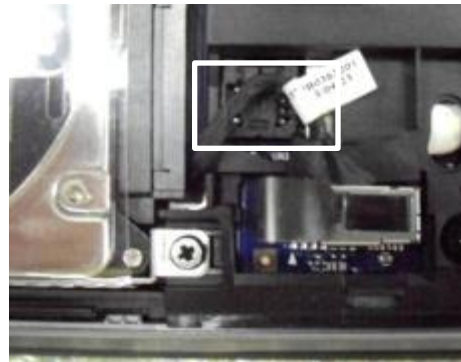


Fig.3

Notes : If finding anything uncommon, notice foreman or assistant at once.

Holding fixture list (holding fixture standard)	Qty	Holding fixture list (holding fixture standard)	Qty
Electric cross screwdriver (#1)	1		

Tabulator: Alicia Chien

Auditor : Stanley Chen

Issue department: NPSU-PPE



Standard Operation Procedure

Document No. Cyclone 14B FA DIS ASS'Y SOP

Station : 6(1/1)

Name : disassembly HDD

Ver. : 0.1

Date : 2013/08/26

Step:

1. Loosen HDD set screw * 4, then remove the HDD. (Fig.1)

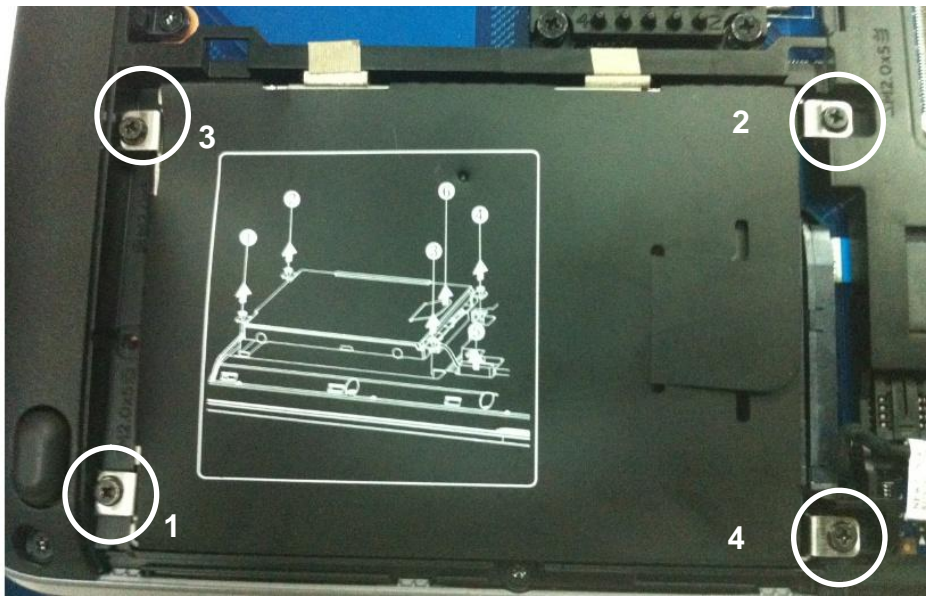


Fig.1

Notes : If finding anything uncommon, notice foreman or assistant at once.

Holding fixture list (holding fixture standard)	Qty	Holding fixture list (holding fixture standard)	Qty
Electric cross screwdriver (#1)	1		

Tabulator: Alicia Chien

Auditor : Stanley Chen

Issue department: NPSU-PPE



Standard Operation Procedure

Document No. Cyclone 14B FA DIS ASS'Y SOP

Station : 7(1/1)

Name : disassembly HDD Bracket

Ver. : 0.1

Date : 2013/08/26



Fig.1

Step:

1. Loosen HDD screw (6052B0131801) * 4. (Fig.1)
2. Separate HDD from HDD bracket (6053B0935201). (Fig.2)
3. Disconnect HDD Cable (6017B0362201) from HDD. (Fig.3)



Fig.2

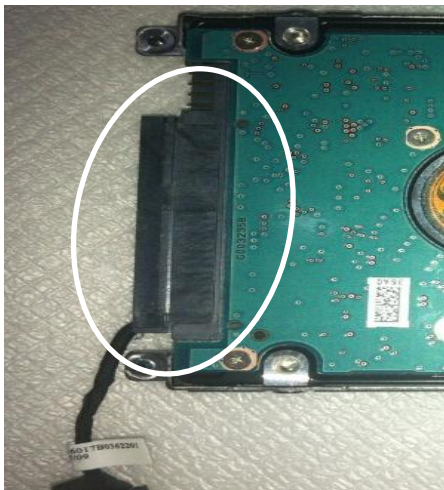


Fig.3

Notes : If finding anything uncommon, notice foreman or assistant at once.

Holding fixture list (holding fixture standard)	Qty	Holding fixture list (holding fixture standard)	Qty
Electric cross screwdriver (#1)	1		

Tabulator: Alicia Chien

Auditor : Stanley Chen

Issue department: NPSU-PPE



Standard Operation Procedure

Document No. Cyclone 14B FA DIS ASS'Y SOP

Station : 8(1/1)

Name : disassembly KB

Ver. : 0.1

Date : 2013/08/26

Step:

[For Non-Point Stick]

1. Slide the K/B downward.
2. Disconnect K/B FPC from M/B CNTR.
(Fig.1/ Fig.2/ Fig.3)

[For Point Stick]

1. Slide the K/B downward.
2. Disconnect K/B FPC from M/B CNTR.
(Fig.1/ Fig.2/ Fig.3)
3. Disconnect Point-stick FFC from MB CNTR.
(Fig.4)



Fig.1

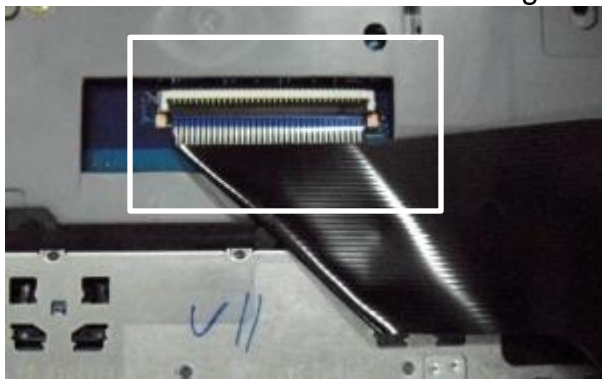


Fig.2



Fig.3

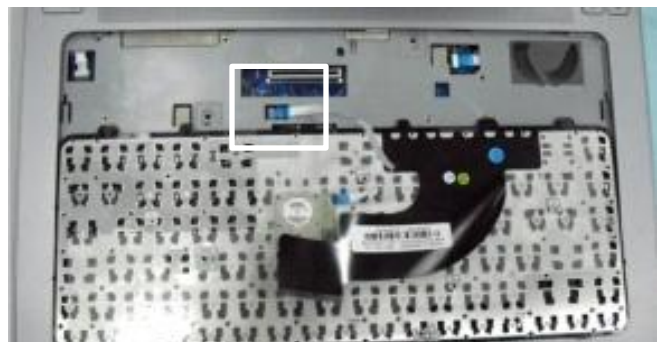


Fig.4

Notes : If finding anything uncommon, notice foreman or assistant at once.

Holding fixture list (holding fixture standard)	Qty	Holding fixture list (holding fixture standard)	Qty



Standard Operation Procedure

Document No. Cyclone 14B FA DIS ASS'Y SOP

Station : 9(1/1)

Name : disassembly FFC

Ver. : 0.1 Date : 2013/08/26

Step:

1. disassembly power/B FFC and function/B FFC. (Fig.1 / Fig.2 / Fig.3)

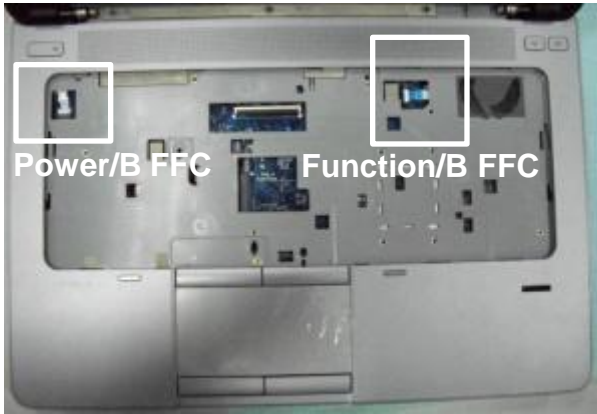


Fig.1

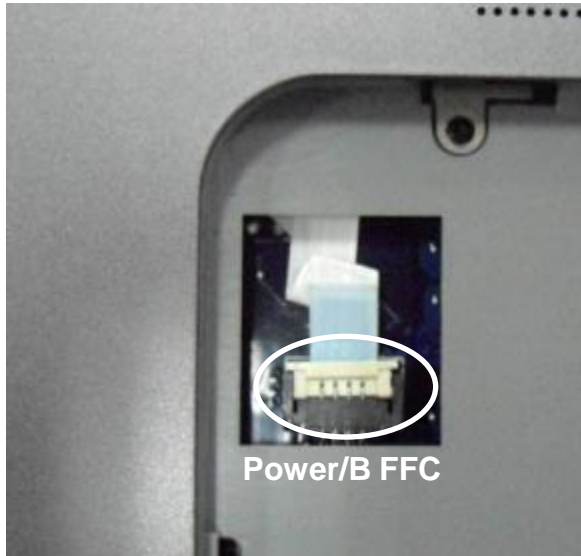


Fig.2



Fig.3

Notes : If finding anything uncommon, notice foreman or assistant at once.

Holding fixture list (holding fixture standard)	Qty	Holding fixture list (holding fixture standard)	Qty

Tabulator: Alicia Chien

Auditor : Stanley Chen

Issue department: NPSU-PPE



Standard Operation Procedure

Document No. Cyclone 14B FA DIS ASS'Y SOP

Station : 10(1/1)

Name : Loosen Screws

Ver. : 0.1

Date : 2013/08/26

Step:

1. Loosen screw (6052B0185501) * 2. (Fig.1)



Fig.1

Note: **梅花or十字?** uncommon, notice foreman or assistant at once.

Holding fixture list (holding fixture standard)	Qty	Holding fixture list (holding fixture standard)	Qty
梅花十字电动起子(T8)	1		

Tabulator: Alicia Chien

Auditor : Stanley Chen

Issue department: NPSU-PPE



Standard Operation Procedure

Document No. Cyclone 14B FA DIS ASS'Y SOP

Station : 11(1/1)

Name : Loosen BTCB Screws

Ver. : 0.1

Date : 2013/08/26

Step:

1. Loosen BTCB screw (6052A0005201) * 4.
(Fig.1)

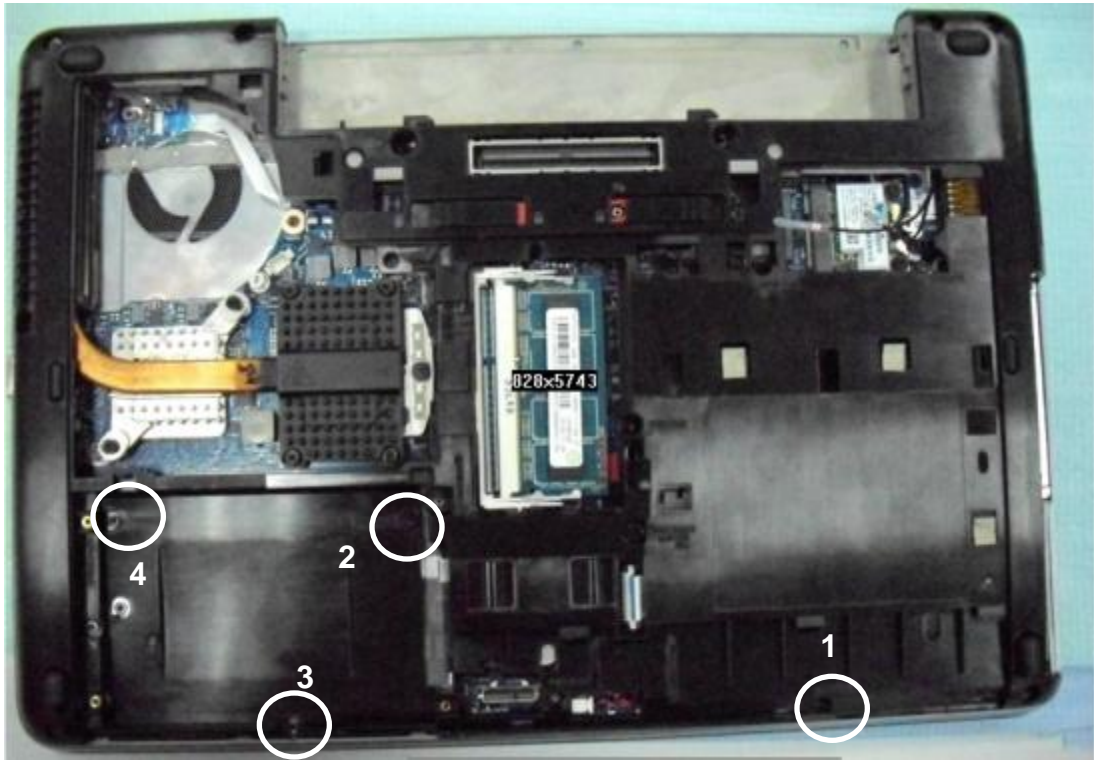


Fig.1

Notes : If finding anything uncommon, notice foreman or assistant at once.

Holding fixture list (holding fixture standard)	Qty	Holding fixture list (holding fixture standard)	Qty
Electric torx screwdriver (T8)	1		

Tabulator: Alicia Chien

Auditor : Stanley Chen

Issue department: NPSU-PPE



Standard Operation Procedure

Document No. Cyclone 14B FA DIS ASS'Y SOP

Station : 12(1/1)

Name : Loosen BTCB Screws

Ver. : 0.1 Date : 2013/08/26

Step:

1. Loosen BTCB screw (6052B0185501) * 4.
(Fig.1)

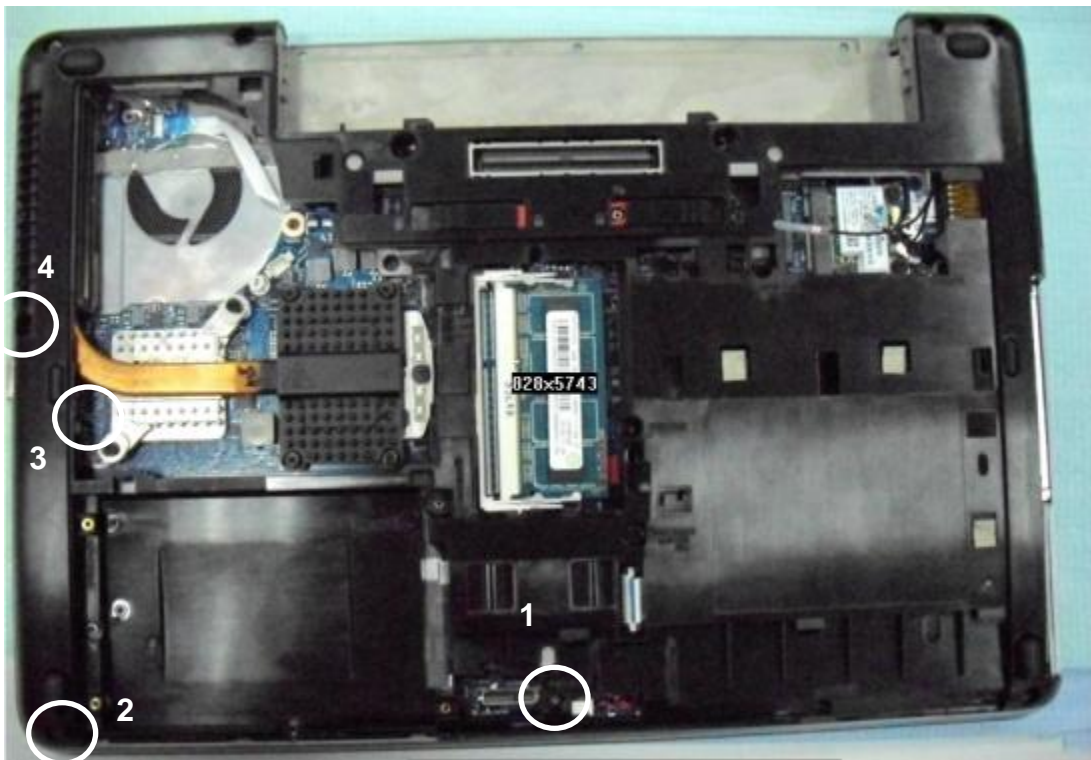


Fig.1

Notes : If finding anything uncommon, notice foreman or assistant at once.

Holding fixture list (holding fixture standard)	Qty	Holding fixture list (holding fixture standard)	Qty
Electric torx screwdriver (T8)	1		

Tabulator: Alicia Chien

Auditor : Stanley Chen

Issue department: NPSU-PPE



Standard Operation Procedure

Document No. Cyclone 14B FA DIS ASS'Y SOP

Station : 13(1/1)

Name : Loosen BT CB Screws

Ver. : 0.1

Date : 2013/08/26

Step:

1. Loosen BT CB screw (6052B0185501) * 4.
(Fig.1)



Fig.1

Notes : If finding anything uncommon, notice foreman or assistant at once.

Holding fixture list (holding fixture standard)	Qty	Holding fixture list (holding fixture standard)	Qty
Electric torx screwdriver (T8)	1		

Tabulator: Alicia Chien

Auditor : Stanley Chen

Issue department: NPSU-PPE



Standard Operation Procedure

Document No. Cyclone 14B FA DIS ASS'Y SOP

Station : 14(1/1)

Name : Loosen BTCB Screws

Ver. : 0.1 Date : 2013/08/26

Step:

1. Loosen BTCB screw (6052B0185501) * 4.
(Fig.1)

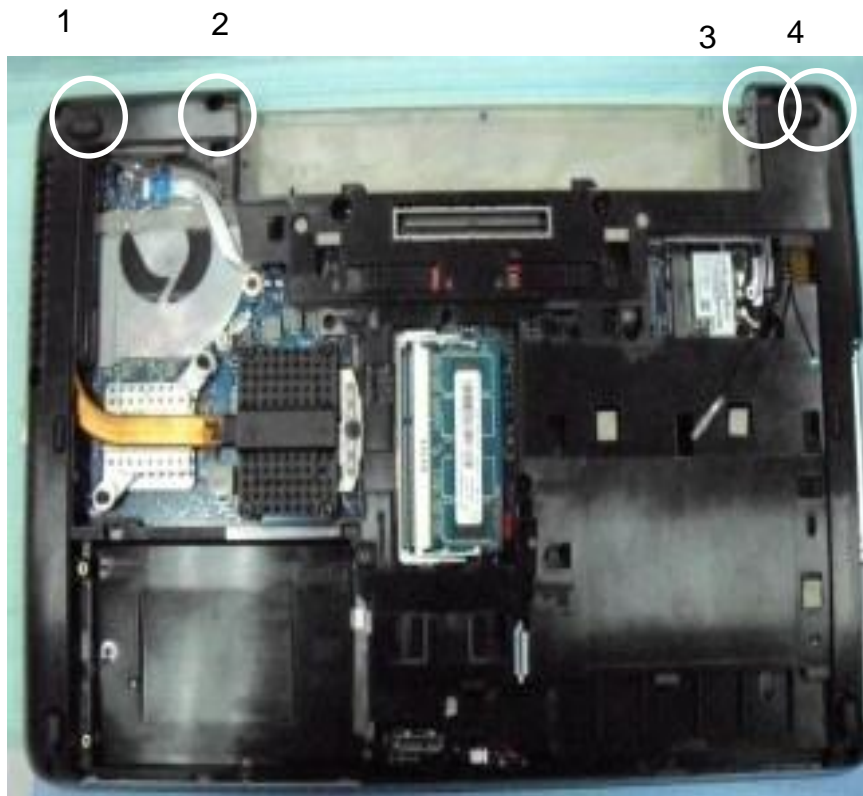


Fig.1

Notes : If finding anything uncommon, notice foreman or assistant at once.

Holding fixture list (holding fixture standard)	Qty	Holding fixture list (holding fixture standard)	Qty
Electric torx screwdriver (T8)	1		

Tabulator: Alicia Chien

Auditor : Stanley Chen

Issue department: NPSU-PPE



Standard Operation Procedure

Document No. Cyclone 14B FA DIS ASS'Y SOP

Station : 15(1/1)

Name : disassembly BTCB

Ver. : 0.1 Date : 2013/08/26

Step:

1. Separate BTCB from TPCB (Fig. 1) .

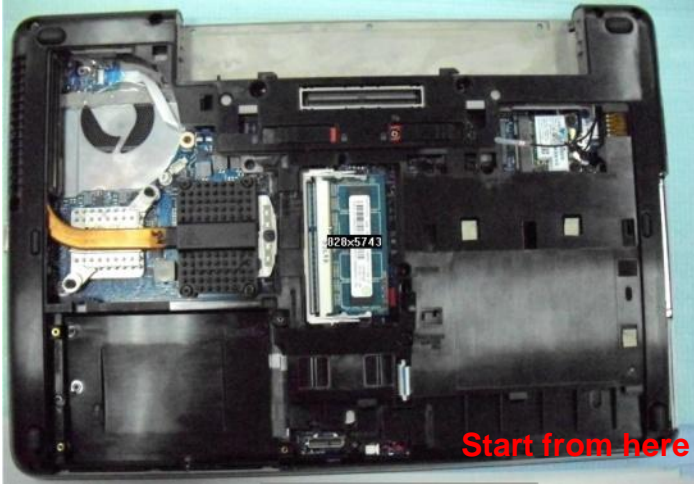


Fig.1

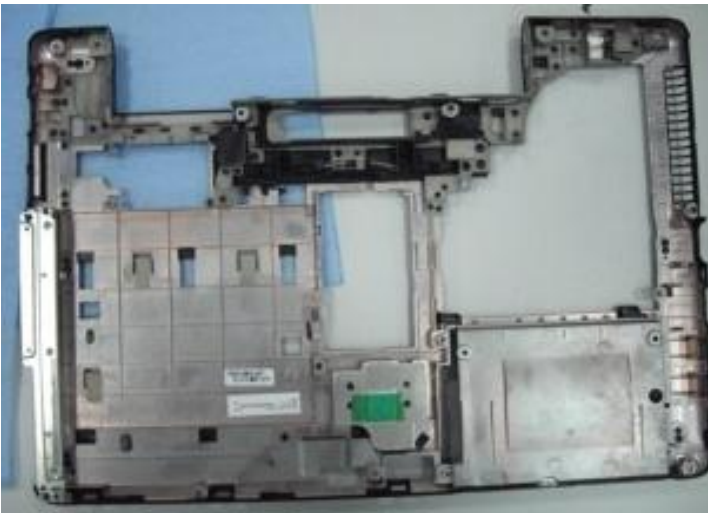


Fig.2

Notes : If finding anything uncommon, notice foreman or assistant at once.

Holding fixture list (holding fixture standard)	Qty	Holding fixture list (holding fixture standard)	Qty

Tabulator: Alicia Chien

Auditor : Stanley Chen

Issue department: NPSU-PPE



Standard Operation Procedure

Document No. Cyclone 14B FA DIS ASS'Y SOP

Station : 16(1/1)

Name : disassembly DDRs

Ver. : 0.1 Date : 2013/08/26

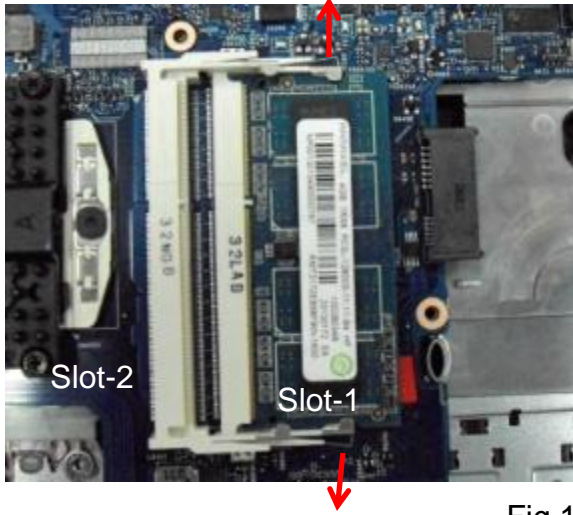


Fig.1

Step:

1. disassembly the two DDRs.

Notes : If finding anything uncommon, notice foreman or assistant at once.

Holding fixture list (holding fixture standard)	Qty	Holding fixture list (holding fixture standard)	Qty

Tabulator: Alicia Chien

Auditor : Stanley Chen

Issue department: NPSU-PPE



Standard Operation Procedure

Document No. Cyclone 14B FA DIS ASS'Y SOP

Station : 17(1/1)

Name : disassembly WLAN Card

Ver. : 0.1 Date : 2013/08/26



Fig.1

Step:

1. Loosen screw - M2.0x2mm (6052B0120001)
* 2. (Fig.1)
2. disassembly WLAN antenna.
3. disassembly WWAN bracket (6053B0935801)
(Fig.2)
4. disassembly WLAN module.

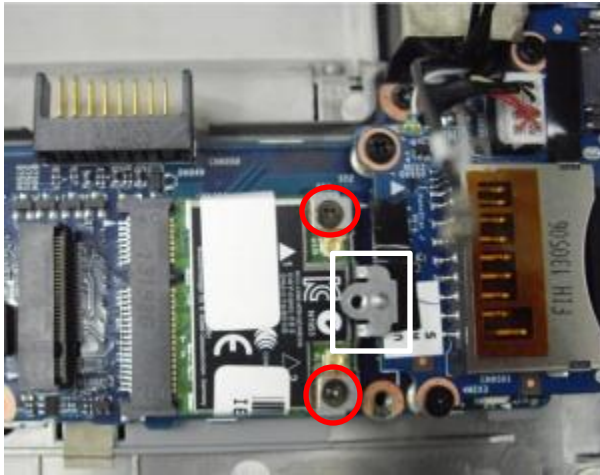


Fig.2

Notes : If finding anything uncommon, notice foreman or assistant at once.

Holding fixture list (holding fixture standard)	Qty	Holding fixture list (holding fixture standard)	Qty
Electric cross screwdriver (#1)	1		

Tabulator: Alicia Chien

Auditor : Stanley Chen

Issue department: NPSU-PPE



Standard Operation Procedure

Document No. Cyclone 14B FA DIS ASS'Y SOP

Station : 18(1/3)

Name : disassembly Antenna & Speaker cable - R Ver. : 0.1 Date : 2013/08/26

Step:

1. Rip the gasket (6054B0235601) * 1, disassembly WWAN & WLAN antenna cable. (Fig.1)
2. Disconnect speaker cable -R from M/B, disassembly the cable. (Fig.2)

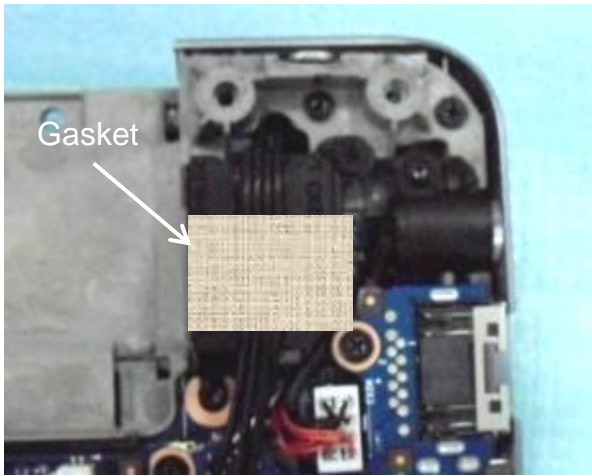


Fig.1

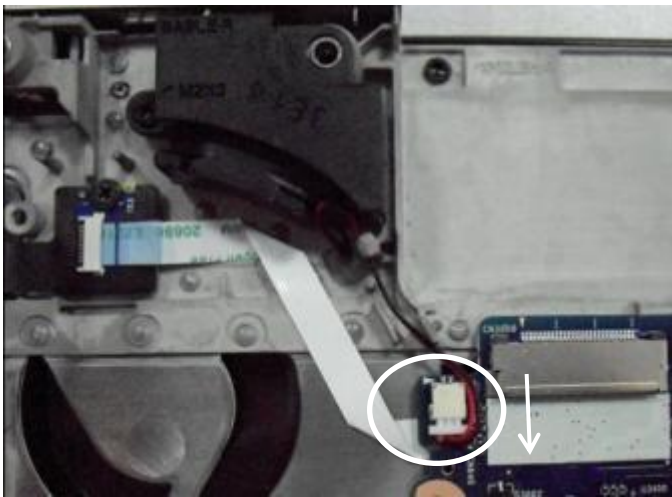


Fig.2

Notes : If finding anything uncommon, notice foreman or assistant at once.

Holding fixture list (holding fixture standard)	Qty	Holding fixture list (holding fixture standard)	Qty

Tabulator: Alicia Chien

Auditor : Stanley Chen

Issue department: NPSU-PPE



Standard Operation Procedure

Document No. Cyclone 14B FA DIS ASS'Y SOP

Station : 18(2/3)

Name : disassembly LCM cable

Ver. : 0.1 Date : 2013/08/26

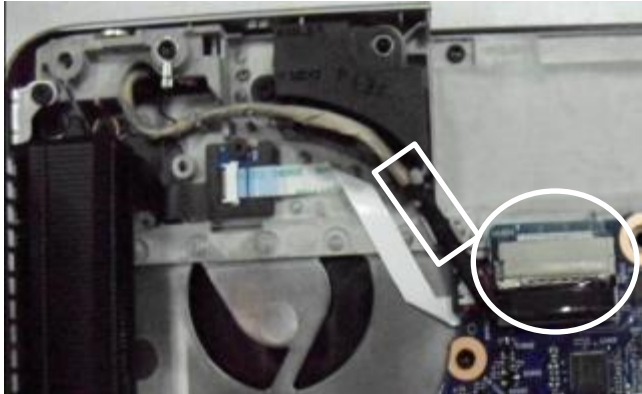


Fig.1

Step:

1. Disconnect LVDS cable from M/B CNTR.
2. disassembly LVDS cable from hooks.
(Fig.1 / Fig.2)

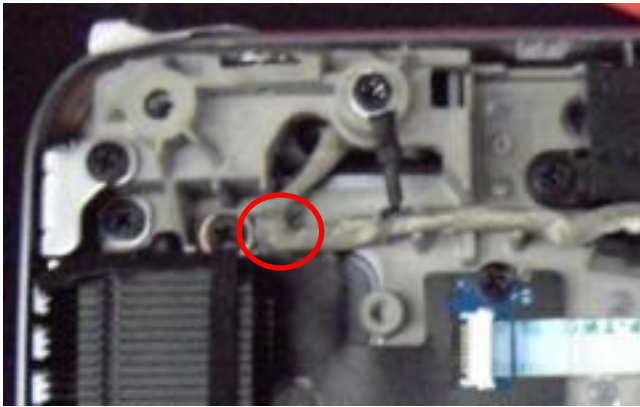


Fig.2

Notes : If finding anything uncommon, notice foreman or assistant at once.

Holding fixture list (holding fixture standard)	Qty	Holding fixture list (holding fixture standard)	Qty

Tabulator: Alicia Chien

Auditor : Stanley Chen

Issue department: NPSU-PPE



Standard Operation Procedure

Document No. Cyclone 14B FA DIS ASS'Y SOP

Station : 18(3/3)

Name : disassembly FFC

Ver. : 0.1 Date : 2013/08/26

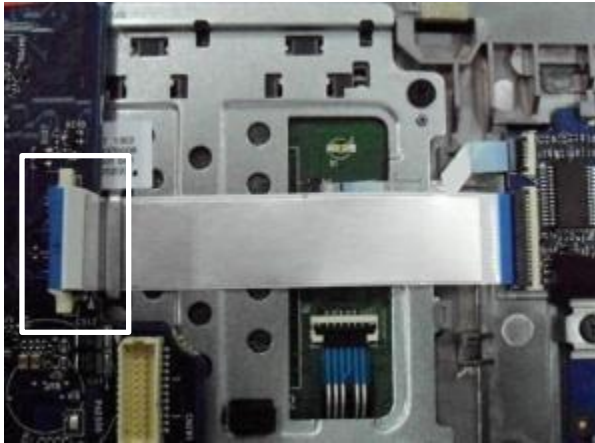


Fig.1

Step:

1. Open the lid of smart card CNTR, then pull up the FFC. (Fig.1)

[With FP SKU]

2. Open the lid of fingerprint CNTR, then pull up the FFC. (Fig.2)

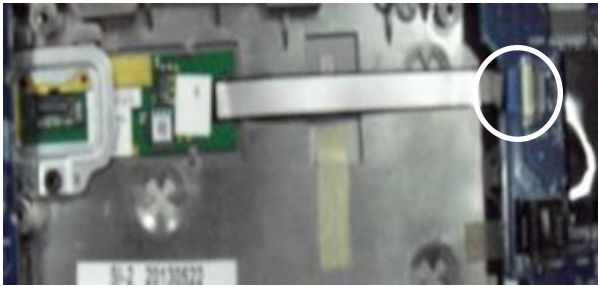


Fig.2

Notes : If finding anything uncommon, notice foreman or assistant at once.

Holding fixture list (holding fixture standard)	Qty	Holding fixture list (holding fixture standard)	Qty

Tabulator: Alicia Chien

Auditor : Stanley Chen

Issue department: NPSU-PPE



Standard Operation Procedure

Document No. Cyclone 14B FA DIS ASS'Y SOP

Station : 19(1/1)

Name : disassembly USB/B

Ver. : 0.1 Date : 2013/08/26

Step:

1. Loosen screw (6052B0127701) * 1. (Fig.1)
2. Loosen screw (6052A0035101) * 3 (mark : Δ) (Fig.1)
3. disassembly USB/B. (Fig.1)
4. Disconnect speaker cable – L. (Fig.2)

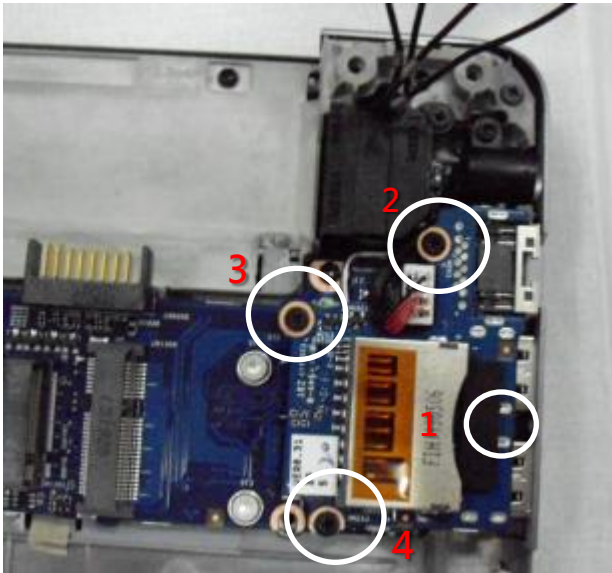


Fig.1

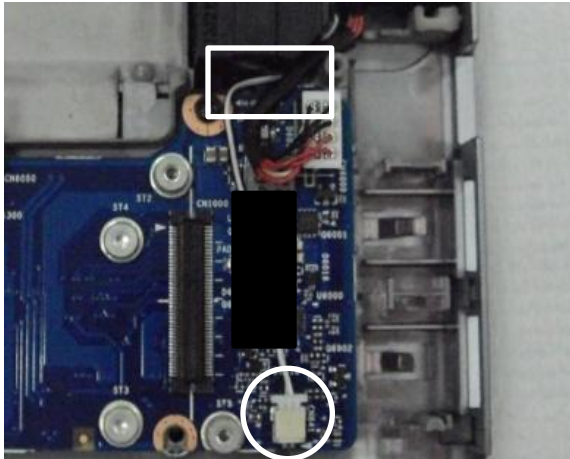


Fig.2

Notes : If finding anything uncommon, notice foreman or assistant at once.

Holding fixture list (holding fixture standard)	Qty	Holding fixture list (holding fixture standard)	Qty
Electric cross screwdriver (#1)	1		

Tabulator: Alicia Chien

Auditor : Stanley Chen

Issue department: NPSU-PPE



Standard Operation Procedure

Document No. Cyclone 14B FA DIS ASS'Y SOP

Station : 20(1/1)

Name : disassembly M/B

Ver. : 0.1 Date : 2013/08/26

Step:

1. Loosen M/B screw (6052A0005201) * 2.
(Fig.1)
2. disassembly M/B.

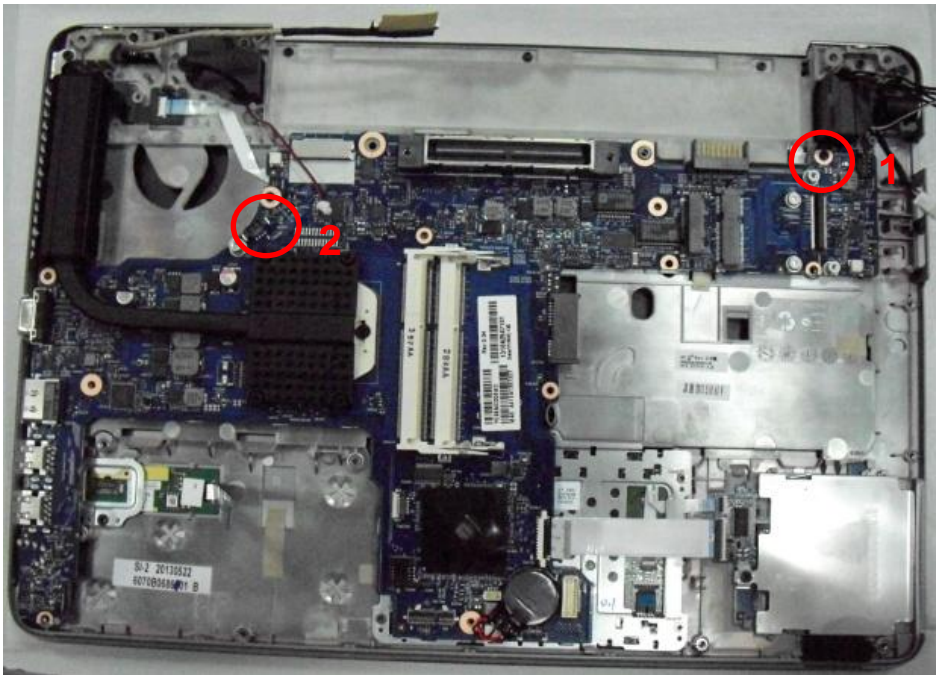


Fig.1

Notes : If finding anything uncommon, notice foreman or assistant at once.

Holding fixture list (holding fixture standard)	Qty	Holding fixture list (holding fixture standard)	Qty
Electric torx screwdriver (#1)	1		

Tabulator: Alicia Chien

Auditor : Stanley Chen

Issue department: NPSU-PPE



Standard Operation Procedure

Document No. Cyclone 14B FA DIS ASS'Y SOP

Station : 21(1/1)

Name : disassembly Thermal Module

Ver. : 0.1

Date : 2013/08/26

Step:

1. Put the M/B on support fixture.
2. Loosen thermal module set screw.
 - ❖ DIS model : 6. (Fig.3) (6~1)
 - ❖ UMA model : 4. (Fig.3) (4~1)
3. disassembly thermal module.



Fig.1



Fig.2

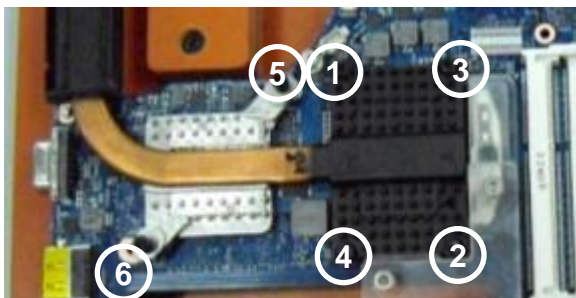


Fig.3

Platform	P/N
DIS	6043B0141301
UMA	6043B0141201

Tab. 1

Notes : If finding anything uncommon, notice foreman or assistant at once.

Holding fixture list (holding fixture standard)	Qty	Holding fixture list (holding fixture standard)	Qty
Electric cross screwdriver(#1)	1		
M/B support fixture (B side)	1		



Standard Operation Procedure

Document No. Cyclone 14B FA DIS ASS'Y SOP

Station : 22(1/1)

Name : disassembly CPU

Ver. : 0.1 Date : 2013/08/26



Fig.1

Step:

1. Put the M/B on support fixture. (Fig.1)
2. Rip the mylar on CPU. (Fig.2)
3. Loosen CPU socket screw by using slot screwdriver or torx screwdriver counterclockwise. (Fig.3)

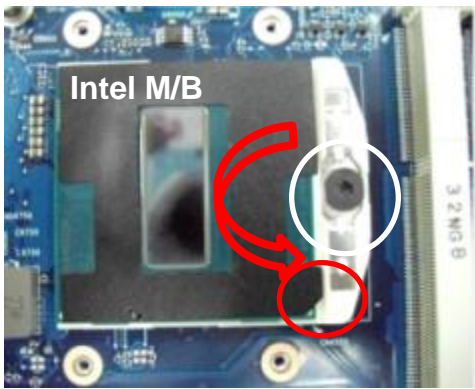


Fig.2

M/B TYPE	CPU Mylar
Cyclone (Intel)	6054B0944401
Thriller (AMD)	6054B0968001
Delhi (AMD)	6054B0968001

Tab. 1

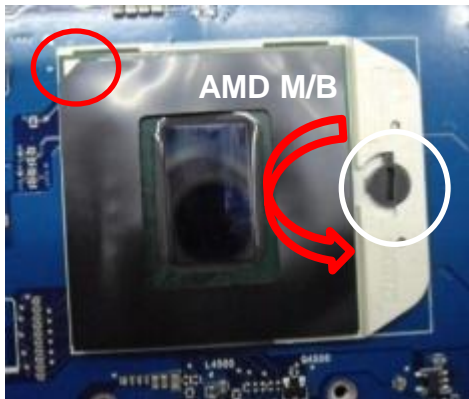


Fig.3

Notes : If finding anything uncommon, notice foreman or assistant at once.

Holding fixture list (holding fixture standard)	Qty	Holding fixture list (holding fixture standard)	Qty
Slot screwdriver	1		
Torx screwdriver	1		
M/B support fixture (B side)	1		

Tabulator: Alicia Chien

Auditor : Stanley Chen

Issue department: NPSU-PPE



Standard Operation Procedure

Document No. Cyclone 14B FA DIS ASS'Y SOP

Station : 23(1/1)

Name : Loosen Screws & disassembly Speakers Ver. : 0.1 Date : 2013/08/26



Fig.1

Step:

1. Loosen screw (6052A0035101) * 1. (Fig.1)
2. Loosen screw (6052A0035101) * 1, take out the speaker - R (6039B0058702). (Fig.2)
3. Loosen screw (6052A0035101) * 1, take out the speaker - L (6039B0058701). (Fig.3)

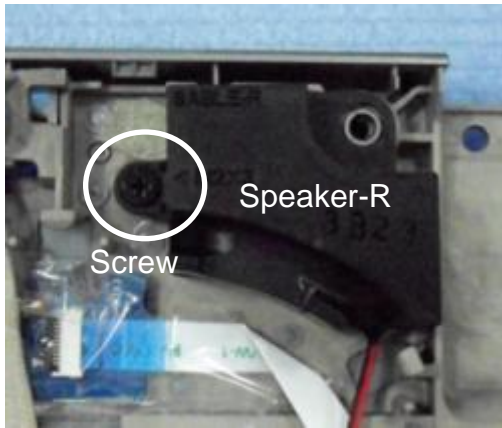


Fig.2

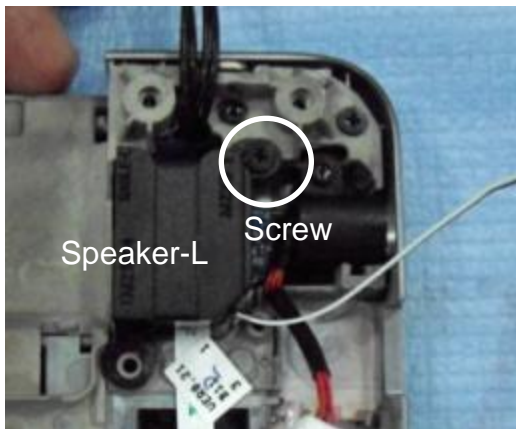


Fig.3

Notes : If finding anything uncommon, notice foreman or assistant at once.

Holding fixture list (holding fixture standard)	Qty	Holding fixture list (holding fixture standard)	Qty
Electric cross screwdriver	1		

Tabulator: Alicia Chien

Auditor : Stanley Chen

Issue department: NPSU-PPE



Standard Operation Procedure

Document No. Cyclone 14B FA DIS ASS'Y SOP

Station : 24(1/1)

Name : disassembly Hinge Cover

Ver. : 0.1 Date : 2013/08/26

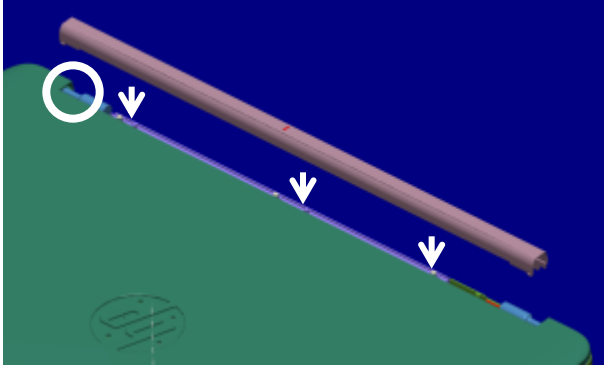


Fig.1

Step:

1. Loosen screw (6052A0005201) * 3. (Fig.2)
2. disassembly hinge cover (6051B0803401) from TPCB. (Fig.1)

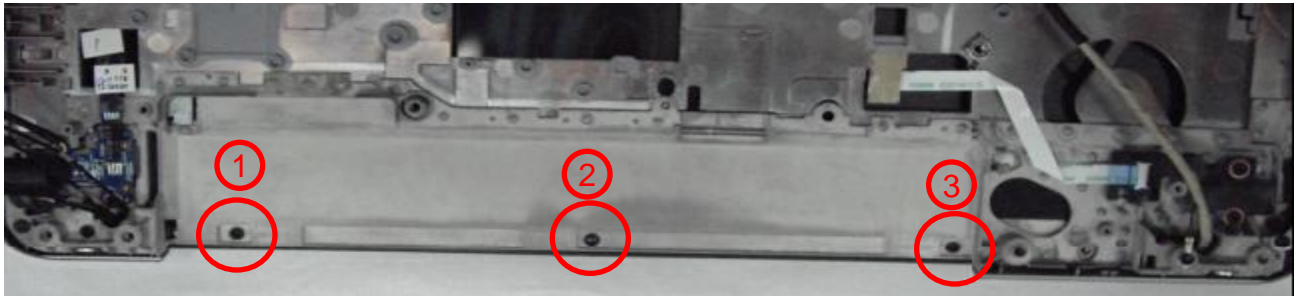


Fig.2

Notes : If finding anything uncommon, notice foreman or assistant at once.

Holding fixture list (holding fixture standard)	Qty	Holding fixture list (holding fixture standard)	Qty
T8 Electric screwdriver	1		

Tabulator: Alicia Chien

Auditor : Stanley Chen

Issue department: NPSU-PPE



Standard Operation Procedure

Document No. Cyclone 14B FA DIS ASS'Y SOP

Station : 25(1/1)

Name : disassembly LCM from TOP

Ver. : 0.1 Date : 2013/08/26



Fig.1

Step:

1. Loosen screw (6052A0005201) * 2.
(Fig.2 / Fig.3 / Fig.4)

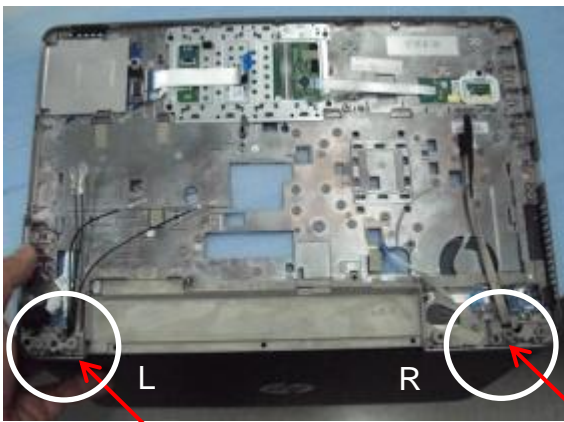


Fig.2



Fig.3

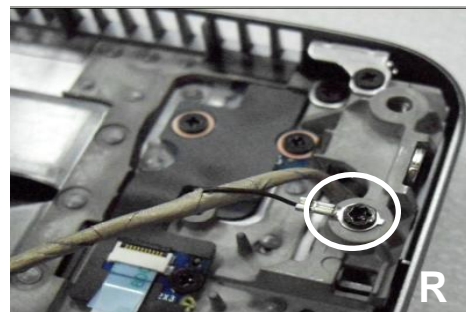


Fig.4

Notes : If finding anything uncommon, notice foreman or assistant at once.

Holding fixture list (holding fixture standard)	Qty	Holding fixture list (holding fixture standard)	Qty
T8 Electric screwdriver	1		

Tabulator: Alicia Chien

Auditor : Stanley Chen

Issue department: NPSU-PPE



Standard Operation Procedure

Document No. Cyclone 14B FA DIS ASS'Y SOP

Station : 26(1/1)

Name : disassembly LCM from TOP

Ver. : 0.1

Date : 2013/08/26

Step:

1. disassembly WWAN & WLAN antenna cable.
(Fig.2)

Without WWAN SKU – 2 cables

With WWAN SKU – 4 cables

2. disassembly LCM cable. (Fig.3)



Fig.1



Fig.2



Fig.3

Notes : If finding anything uncommon, notice foreman or assistant at once.

Holding fixture list (holding fixture standard)	Qty	Holding fixture list (holding fixture standard)	Qty

Tabulator: Alicia Chien

Auditor : Stanley Chen

Issue department: NPSU-PPE



Standard Operation Procedure

Document No. Cyclone 14B FA DIS ASS'Y SOP

Station : 27(1/1)

Name : disassembly Finger Printer (or Dummy) Ver. : 0.1

Date : 2013/08/26

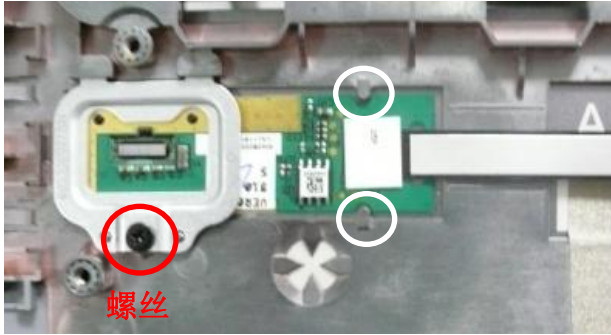


Fig.1

Step:

1. Loosen screw - M2x3 (6052A0035101) * 1, then remove the bracket (6053B0927201). (Fig.1)

[For With Finger Printer]

2. disassembly finger printer (1397B0168801). (Fig.1)

[For Without Finger Printer]

2. disassembly FP dummy (6051B0793801). (Fig.2)



Fig.2

Notes : If finding anything uncommon, notice foreman or assistant at once.

Holding fixture list (holding fixture standard)	Qty	Holding fixture list (holding fixture standard)	Qty
Electric cross screwdriver (#1)	1		

Tabulator: Alicia Chien

Auditor : Stanley Chen

Issue department: NPSU-PPE

MANUFACTURING PROCESS INSTRUCTIONS MECHANICAL ASSEMBLY

MODEL : Cyclone 14B

Sub-assembly name:	LCM DIS ASS'Y		
Document No.:	Cyclone 14B LCM DIS ASS'Y SOP		
Written by:	Stanley Chen	Revision:	0.1
Date:	2013/08/27	Page:	1 of 14

A. Current station version list

Station	Ver.	Station	Ver.	Station	Ver.	Station	Ver.
1	0.1	11	0.1				
2	0.1	12	0.1				
3	0.1	13	0.1				
4	0.1						
5	0.1						
6	0.1						
7	0.1						
8	0.1						
9	0.1						
10	0.1						

B. Version Modify list

Revision	Date	Station	Content	Ver.	Design
0.1	2013/08/27	ALL	FIRST VERSION	0.1	Stanley Chen



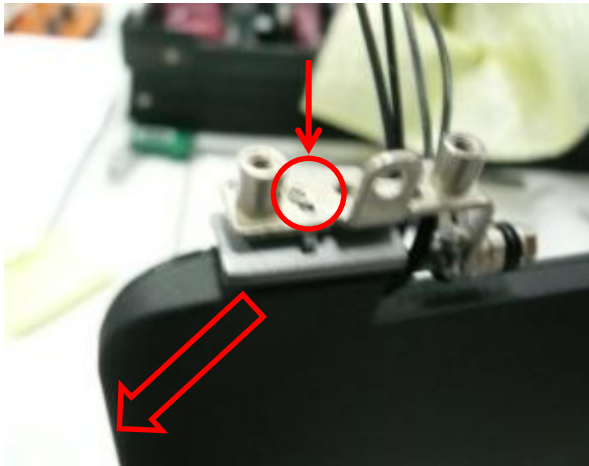
Standard Operation Procedure

Document No. Cyclone 14B LCM DIS ASS'Y SOP

Station : 1(1/1)

Name : disassembly Hinge Cap

Ver. : 0.1 Date : 2013/08/27



Step :

1. Put the LCM on support fixture.
2. Loosen screw (6052B0031301) * 1 on hinge bracket, then take out the hinge cap – R (6051B0805601) (Fig.1) and recycle it .
3. Loosen screw (6052B0031301) * 1 on hinge bracket, then take out the hinge cap – L (6051B0805301) (Fig.2) and recycle it .



Fig.1

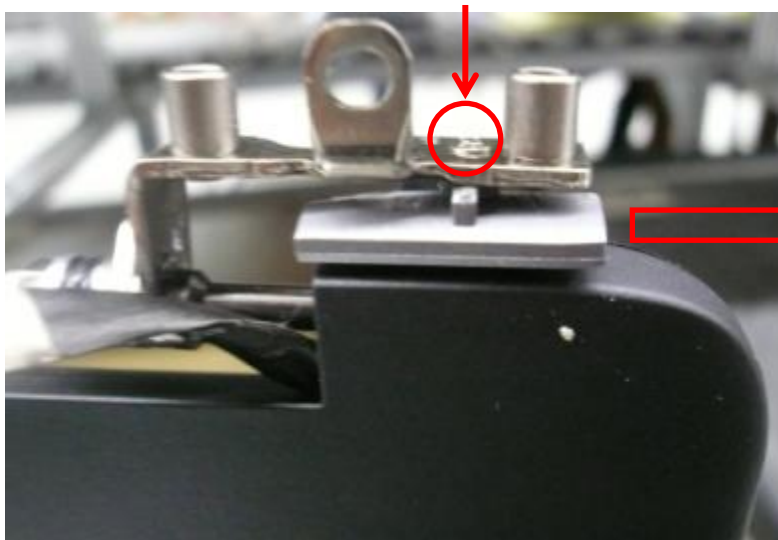


Fig.2

Notes : If finding anything uncommon, notice foreman or assistant at once.

Holding fixture list (holding fixture standard)	Qty	Holding fixture list (holding fixture standard)	Qty
Electric cross screwdriver(#0)	1		
Hinge cap support fixture	1		

Tabulator : Alicia Chien

Auditor : Stanley Chen

Issue department : NPSU-PPE



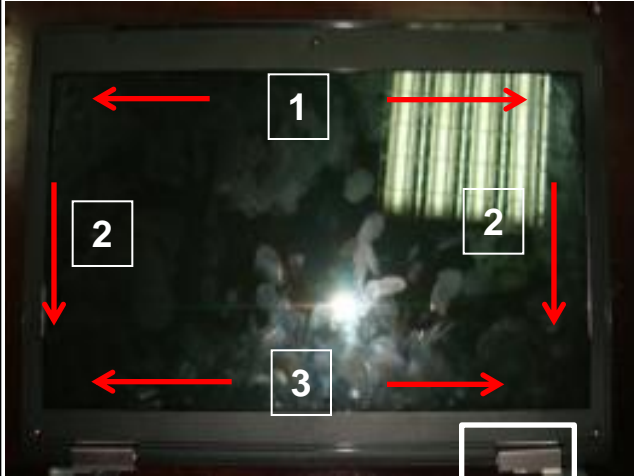
Standard Operation Procedure

Document No. Cyclone 14B LCM DIS ASS'Y SOP

Station : 2(1/1)

Name : disassembly Bezel

Ver. : 0.1 Date : 2013/08/27



Step :

1. disassembly bezel in order. (Fig.1)
2. Recycle Bazel

Fig.1

Notes : If finding anything uncommon, notice foreman or assistant at once.

Holding fixture list (holding fixture standard)	Qty	Holding fixture list (holding fixture standard)	Qty

Tabulator : Alicia Chien

Auditor : Stanley Chen

Issue department : NPSU-PPE



Standard Operation Procedure

Document No. Cyclone 14B LCM DIS ASS'Y SOP

Station : 3(1/1)

Name : Loosen Panel Screws

Ver. : 0.1

Date : 2013/08/27

Step :

1. Loosen screw (6052B0120001) * 4. (Fig.1)

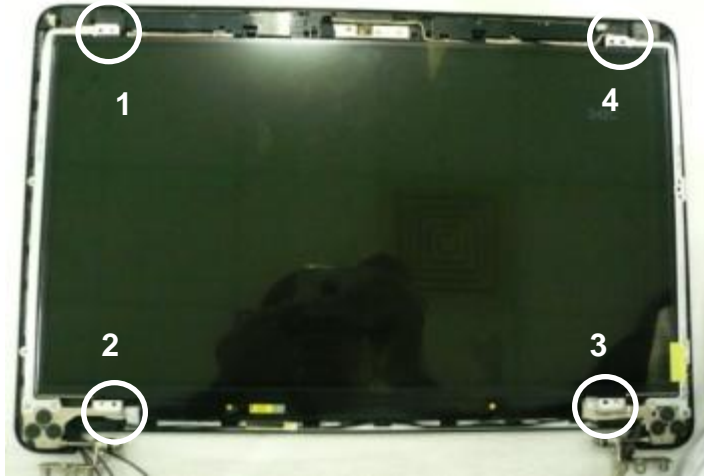


Fig.1

Notes : If finding anything uncommon, notice foreman or assistant at once.

Holding fixture list (holding fixture standard)	Qty	Holding fixture list (holding fixture standard)	Qty
Electric cross screwdriver(#1)	1		

Tabulator : Alicia Chien

Auditor : Stanley Chen

Issue department : NPSU-PPE



Standard Operation Procedure

Document No. Cyclone 14B LCM DIS ASS'Y SOP

Station : 4(1/1)

Name : disassembly LCD

Ver. : 0.1 Date : 2013/08/27

Step :

1. Rip the pulling strip, disconnect the LCD cable from panel CNTR. (Fig.1 & Fig. 2)



Fig.1

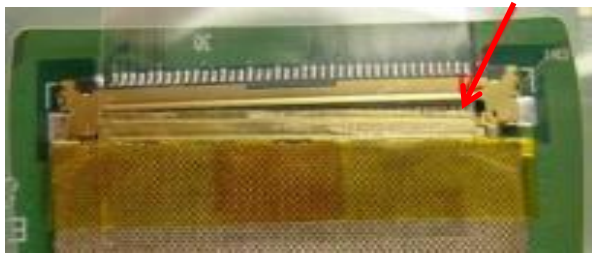


Fig.2

Notes : If finding anything uncommon, notice foreman or assistant at once.

Holding fixture list (holding fixture standard)	Qty	Holding fixture list (holding fixture standard)	Qty

Tabulator : Alicia Chien

Auditor : Stanley Chen

Issue department : NPSU-PPE



Standard Operation Procedure

Document No. Cyclone 14B LCM DIS ASS'Y SOP

Station : 5(1/1)

Name : Remove Sponges

Ver. : 0.1 Date : 2013/08/27

Step :

[For FHD Panel : Rip the sponge]

1. Rip the sponge (10*70*1.0T) * 3. (Fig.1)



Fig.1

Notes : If finding anything uncommon, notice foreman or assistant at once.

Holding fixture list (holding fixture standard)	Qty	Holding fixture list (holding fixture standard)	Qty

Tabulator : Alicia Chien

Auditor : Stanley Chen

Issue department : NPSU-PPE



Standard Operation Procedure

Document No. Cyclone 14B LCM DIS ASS'Y SOP

Station : 6(1/1)

Name : Loosen Hinge BRKT Screws

Ver. : 0.1

Date : 2013/08/27

Step :

1. Loosen screw (6052B0096201) * 6.

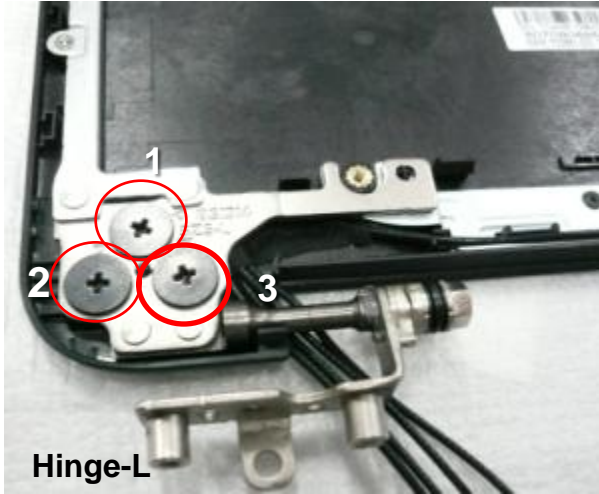


Fig.1

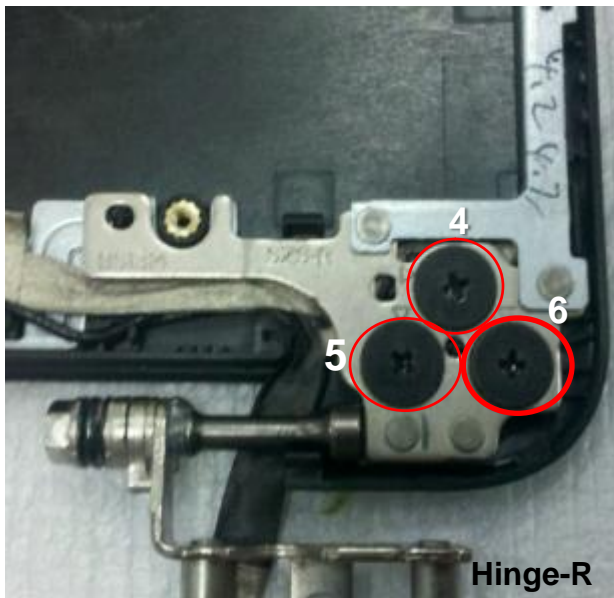


Fig.2

Notes : If finding anything uncommon, notice foreman or assistant at once.

Holding fixture list (holding fixture standard)	Qty	Holding fixture list (holding fixture standard)	Qty
Electric cross screwdriver(#1)	1		

Tabulator : Alicia Chien

Auditor : Stanley Chen

Issue department : NPSU-PPE



Standard Operation Procedure

Document No. Cyclone 14B LCM DIS ASS'Y SOP

Station : 7(1/1)

Name : disassembly Hinge BRKT

Ver. : 0.1 Date : 2013/08/27

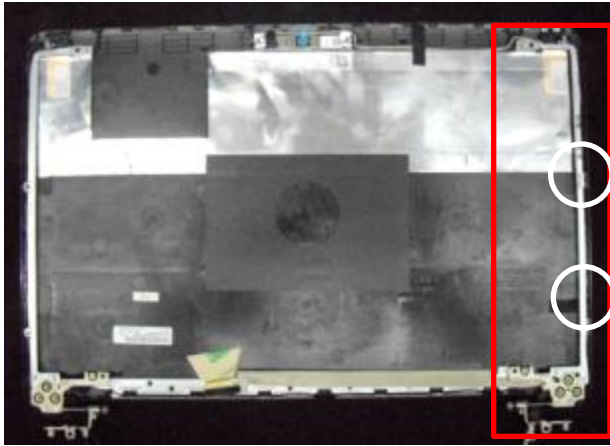


Fig.1

Step :

1. Disassembly Hinge bracket-R (Fig.1) and recycle it .
2. Loosen screw (6052B0120001) * 2. (Fig.2)
3. disassembly hinge brackets -L (Fig.2) and recycle it .

Vendor	Hinge BRKT - L	Hinge BRKT - R
SZS	6055B0027601	6055B0027602
SNR (鑫万禾)	6055B0028001	6055B0028002



Fig.2

Notes : If finding anything uncommon, notice foreman or assistant at once.

Holding fixture list (holding fixture standard)	Qty	Holding fixture list (holding fixture standard)	Qty
Electric cross screwdriver(#1)	1		

Tabulator : Alicia Chien

Auditor : Stanley Chen

Issue department : NPSU-PPE



Standard Operation Procedure

Document No. Cyclone 14B LCM DIS ASS'Y SOP

Station : 8(1/1)

Name : disassembly Cables - L

Ver. : 0.1 Date : 2013/08/27

Step :

1. disassembly WWAN & WLAN antenna cables from left side of A case . (Fig.1 / Fig.2 / Fig.3)



Fig.1



Fig.2



Fig.3

Notes : If finding anything uncommon, notice foreman or assistant at once.

Holding fixture list (holding fixture standard)	Qty	Holding fixture list (holding fixture standard)	Qty



Standard Operation Procedure

Document No. Cyclone 14B LCM DIS ASS'Y SOP

Station : 9(1/1)

Name : disassembly Cables

Ver. : 0.1

Date : 2013/08/27

Step :

1. disassembly WWAN & WLAN antenna cables from bottom side of A case. (Fig.1 / Fig.2)



Fig.1

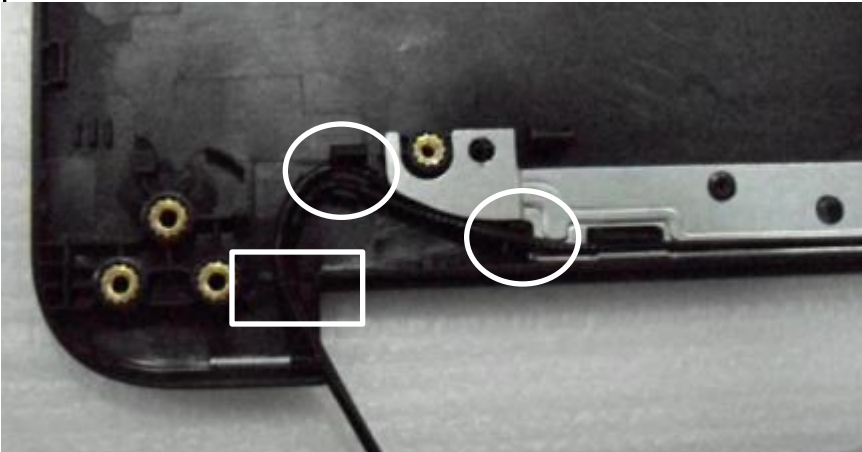


Fig.2

Notes : If finding anything uncommon, notice foreman or assistant at once.

Holding fixture list (holding fixture standard)	Qty	Holding fixture list (holding fixture standard)	Qty



Standard Operation Procedure

Document No. Cyclone 14B LCM DIS ASS'Y SOP

Station : 10(1/1)

Name : disassembly Cables - R

Ver. : 0.1 Date : 2013/08/27

Step :

1. disassembly webcam & WWAN & WLAN cables from right side of A case. (Fig.1)



Fig.1

Notes : If finding anything uncommon, notice foreman or assistant at once.

Holding fixture list (holding fixture standard)	Qty	Holding fixture list (holding fixture standard)	Qty

Tabulator : Alicia Chien

Auditor : Stanley Chen

Issue department : NPSU-PPE



Standard Operation Procedure

Document No. Cyclone 14B LCM DIS ASS'Y SOP

Station : 11(1/1)

Name : disassembly WLAN

Ver. : 0.1 Date : 2013/08/27

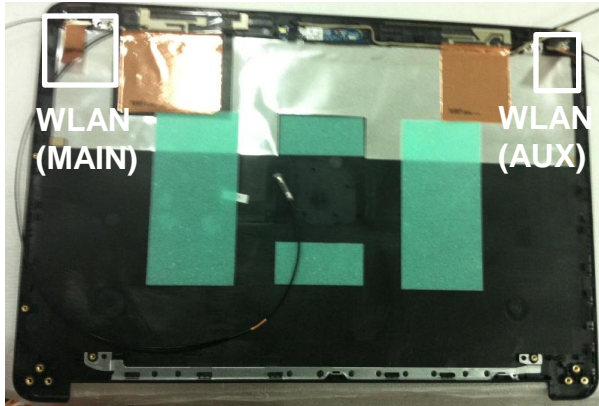


Fig.1

Step :

1. Rip the WLAN AL foil, disassembly WLAN antenna (Fig.1) and recycle it .
L - WLAN (MAIN) – Fig.2
R - WLAN (AUX) – Fig.3

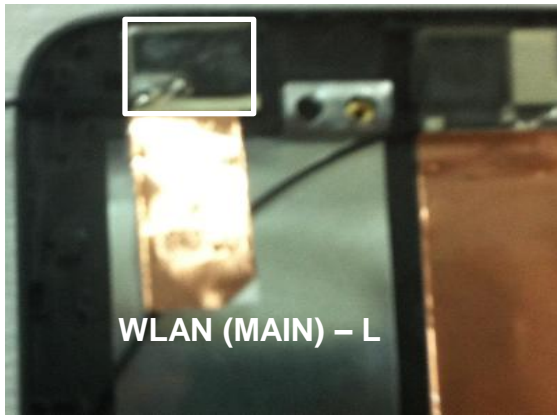


Fig.2

Vendor	MAIN P/N	AUX P/N
WNC 启碁	6036B0113701	6036B0114001
Yageo 国巨	6036B0113801	6036B0114101
Acon 连展	6036B0113601	6036B0113901

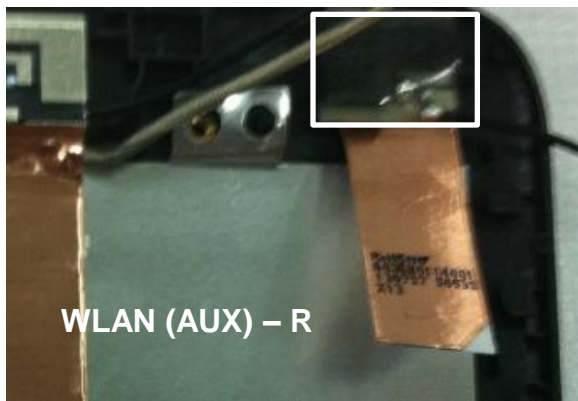


Fig.3

Notes : If finding anything uncommon, notice foreman or assistant at once.

Holding fixture list (holding fixture standard)	Qty	Holding fixture list (holding fixture standard)	Qty



Standard Operation Procedure

Document No. Cyclone 14B LCM DIS ASS'Y SOP

Station : 12(1/1)

Name : disassembly WWAN

Ver. : 0.1 Date : 2013/08/27

Step :

[For With WWAN Antenna Module]

1. Rip the WWAN AL foil, disassembly WWAN antenna(Fig.1) and recycle it .

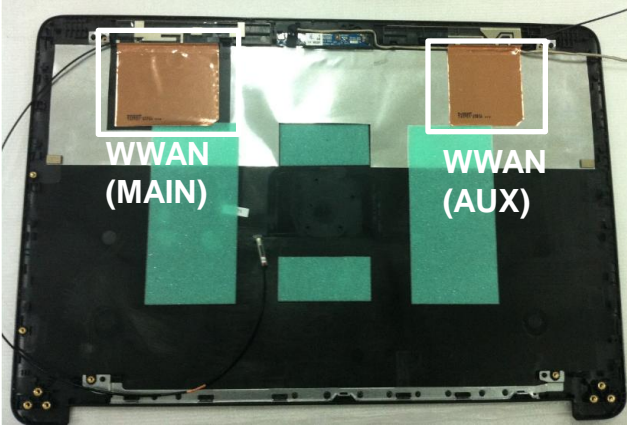


Fig.1

Vendor	MAIN P/N	AUX P/N
WNC 启碁	6036B0114201	6036B0114601
Yageo 国巨	6036B0114401	6036B0114701
Acon 连展	6036B0114301	6036B0114501

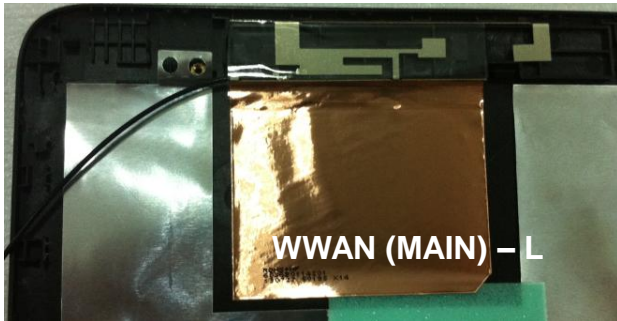


Fig.2

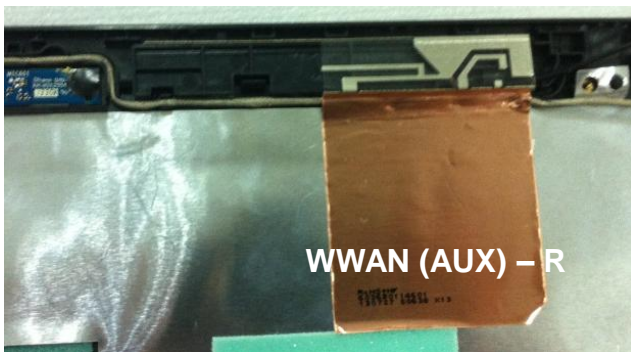


Fig.3

Notes : If finding anything uncommon, notice foreman or assistant at once.

Holding fixture list (holding fixture standard)	Qty	Holding fixture list (holding fixture standard)	Qty

Tabulator : Alicia Chien

Auditor : Stanley Chen

Issue department : NPSU-PPE



Standard Operation Procedure

Document No. Cyclone 14B LCM DIS ASS'Y SOP

Station : 13(1/1)

Name : disassembly Webcam

Ver. : 0.1 Date : 2013/08/27

Step :

1. disassembly LCM cable. (Fig.1 & Fig.2)
2. Disconnect camera cable from camera/B CNTR(Fig.3) and recycle camera/B .
3. For camera model : Rip webcam gasket (6054B0788001) * 2.

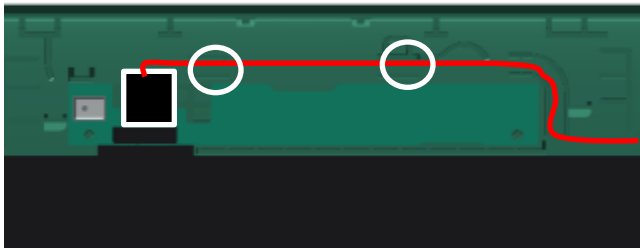


Fig.2



Fig.3

Notes : If finding anything uncommon, notice foreman or assistant at once.

Holding fixture list (holding fixture standard)	Qty	Holding fixture list (holding fixture standard)	Qty

Tabulator : Alicia Chien

Auditor : Stanley Chen

Issue department : NPSU-PPE



Standard Operation Procedure

Document No. Cyclone 14B LCM DIS ASS'Y SOP

Station : 14(1/1)

Name : Recycle BTDL

Ver. : 0.1 Date : 2013/08/27

Step :

1. Recycle BTDL (6070B0685401).



Fig.1

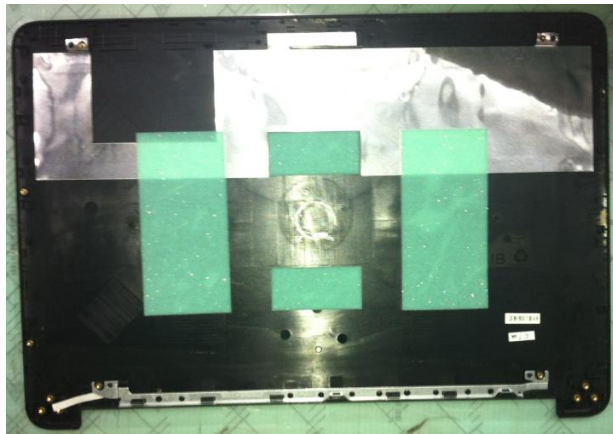


Fig.2

Notes : If finding anything uncommon, notice foreman or assistant at once.

Holding fixture list (holding fixture standard)	Qty	Holding fixture list (holding fixture standard)	Qty